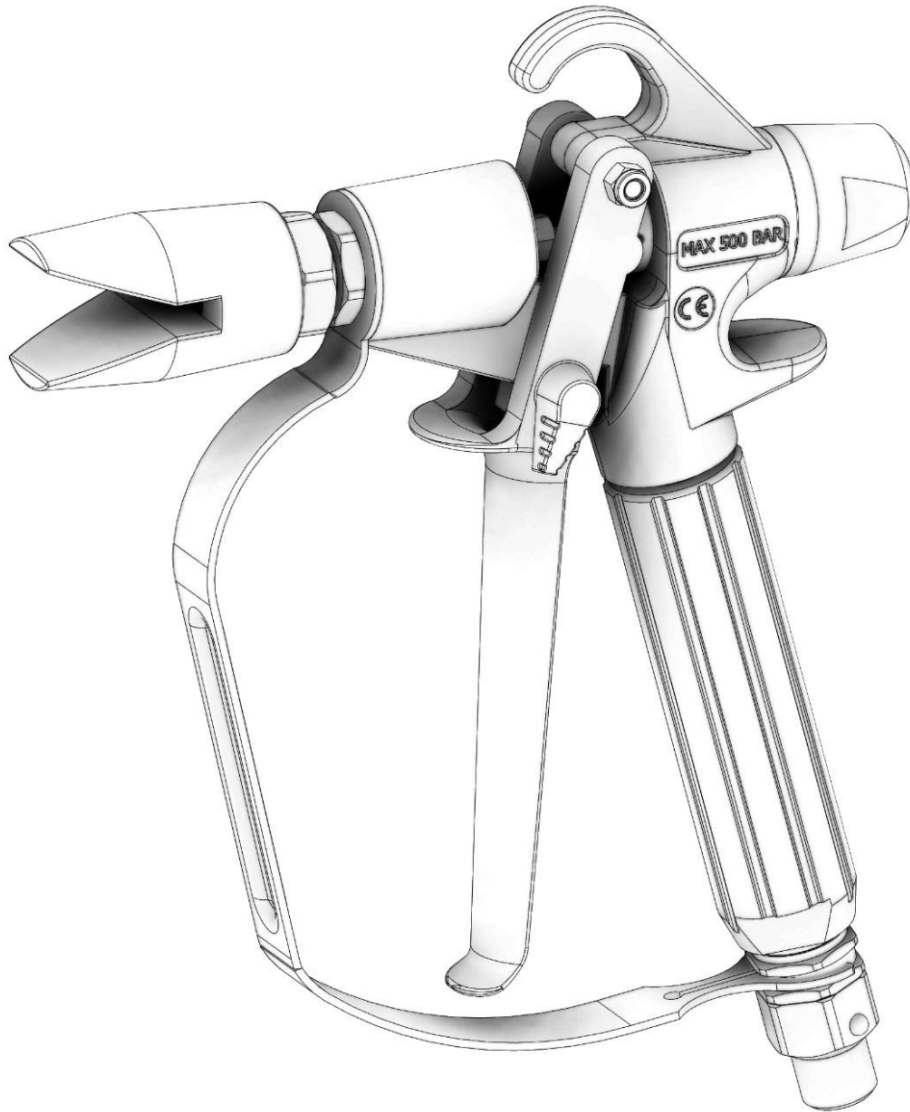



USE AND MAINTENANCE MANUAL



WP:500 bar – 7250psi

MANUAL SPRAYGUN HIGH PRESSURE

**EURO
FINISHING**

CE  **II 2GT6 X**

1. MANUAL GENERAL INFORMATION

The use and maintenance manual is the document that follows the equipment from its construction until its demolition. It is therefore an integral parts of the unit and requires your full attention before any activity involves the equipment

2. GENERAL SAFETY INSTRUCTION

2.1. Warnings for operator

Operator must know content of this manual. Keep manual always near the working place.

2.2. Safety in the workplace


Ensure that all persons in the work area during spraying, wear the personal protective equipment. Make sure that the environment there are no ignition sources such as open flames, sparks, etc. or hot surfaces.

2.3. Grounding the equipment

During spraying, due to the speed of flow paint, in particular situations may accumulate on the equipment electrostatic charges that in discharging phase my generate sparks or flame. Due to this particular condition, ensure the proper grounding through a fluid feed flexible and the pump properly grounded.

2.4. Explosion protection identidication

As defined in the Directive 94/9/CE (ATEX), the unit is suitable for use in areas whire there is an explosion hazard.

| | | | |
|-------|---|--|-----------|
| CE: | European Community |  | II 2GT6 X |
| Ex: | Symbol for explosion protection | | |
| II: | Unite class II | | |
| 2G: | Category ` (zone 1); Ex atmosphere gas | | |
| T6 X: | Temperature class: maximum surface temperature 85°C | | |

3. WARRANTY

3.1. Explosion protection identification

All equipment from Filtermedia Srl are guarantee for a period of 12 months from invoicing date, unless otherwise agreed in writing. This warranty applies only when the equipment is installed, operated and maintained in accordance with Filtermedia Srl written recommendations. The warranty covers all defects of material, manufacturing and provide replacement. This warranty is conditioned upon the prepaid return of the equipment claimed to be defective for verification of the claimed defect. If the claimed defect is verified, we will repair or replace free of charge any defective parts. The equipment will be returned transportation prepaid. This warranty does not entitles for any request for compensation from damages directly or indirectly caused from our equipment to persons or objects or intervention made from buyer or by third parties. Warranty does not cover parts subject to normal worn.

This warranty is void when:

- Filled form in attachment is not returned;
- In case of non payment or contract default;
- Repairing or modification made without our permission;
- Tampered equipment;
- Damage caused by misuse, lack of maintenance, falls or other causes not ascribed to normal operating functions.

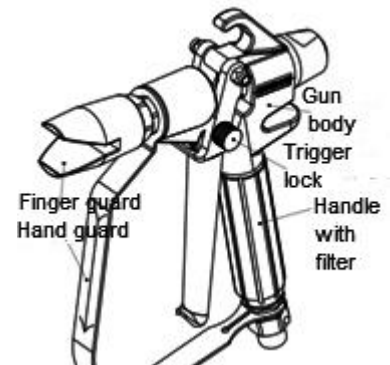
4. DESCRIPTION

4.1. Packing

The units are collocated in a carton box. All series components are included in same box. During transport and storage make sure that temperature will be between - 15° and 40°C and for short period (max 24 hours) +50°C which may cause damages to the gun. Storage place should be with damp from 30 till 80%.

4.2. Description

Manual spray gun B500 is employed for high pressure (500bar) painting application and the pulverization of paints due micro-atomizers reduce paint-fog and leave coated surfaces smooth and uniform. This gun is solid and light, perfect for long works without problems.



4.3. Workable products

Employable materials : paints and synthetic enamels, polyurethane, primers, mono-components, double-layer metalized paints, bi-components, water based paints.

For gun uses with special products it necessary to require approval from producer in order to conform technical features of machine for processing indicated special products.

FILTERMEDIA SRL is not responsible for injury which might be caused from personnel not trained or not authorized and for using machine for different purposes as indicated.

It remains in any cases forbidden gun use for distribution of inflammable products or high toxic elements like gasoline, herbicides, pesticides.

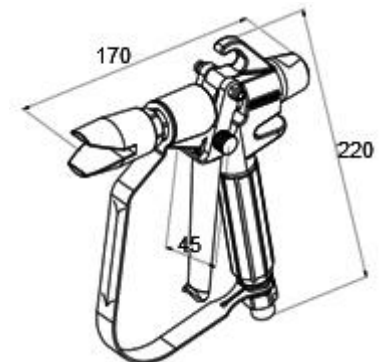
4.4. Technical data

Max Wp: 500bar

Fluid Inlet: ¼", 16x1.5, ½" JIC, 3/8"

Filter: Gun filter (standard FM2002, 50M)

Weight: 630 gr



4.5. Setting-up

Gun should be powered with a max. pressure of 500 bar. For set-up proceed as follow:

Lock the trigger

Connect fluid hose; use only hose for high pressures.

Check the filter.

Check pressures in every parts of the system.

Ground the spray gun through connection to a properly grounded fluid supply hose and pump.

Adjust working pressure and check every connection.

Unlock the trigger, and check when the perfect lock when you release it.

Painting process must performed in a spray booth with aspiration system.

Do not use the unit if aspiration system doesn't work.

4.6. Procedure for pressure discharge

When system will be stopped for plant operations or for end working process it is COMPULSORY discharge completely high pressure present in the plant. Closing general air supply , automatically also air to the motor of pump will be discharged.

Attention: Product flexible hose is still with pressure. Proceed as follow:

Lock the trigger.

Turn off the air supply.

Unlock the trigger.

Hold a metal part of the gun firmly to a grounded metal pail. Trigger the gun to relieve pressure.

5. MAINTENANCE

5.1. Ordinary maintenance

Ordinary maintenance of Gun B500 can be easily made. In order to guaranty best performances, gun require a daily cleaning and in any case at the end of working activities residual liquid should be removed in order to avoid material dry out into paint system.

5.2. Change of packing gland

Discharge completely pressure from installation, dismantle finger guard, nozzle, spreader, adjusting knob, spring and 3mm nut. With a wrench of 8mm unscrew the needle from the front side of the gun. Remove the piston, unscrew packing gland screw, remove pressure washer and replace packing gland with new one.

5.3. Cleaning

Discharge pressure, disassemble finger guard and nozzle. Check eventually damages to gaskets: if are broken or damaged, replace them. Check very carefully cleaning of nozzle, plunge into solvent in order to remove internal residual material, blowing air from rear part to eliminate all impurities. Nozzle should be reassembled with his gasket. Disassemble spreader and clean very well with a brush mainly the ball seat.

Do not use metal tools to clean the air cap holes as this may scratch them; scratches can distort the spray pattern. Lubricate periodically packing gland ring. Lubricating should not contain silicone.

6. GENERAL TROUBLESHOOTING

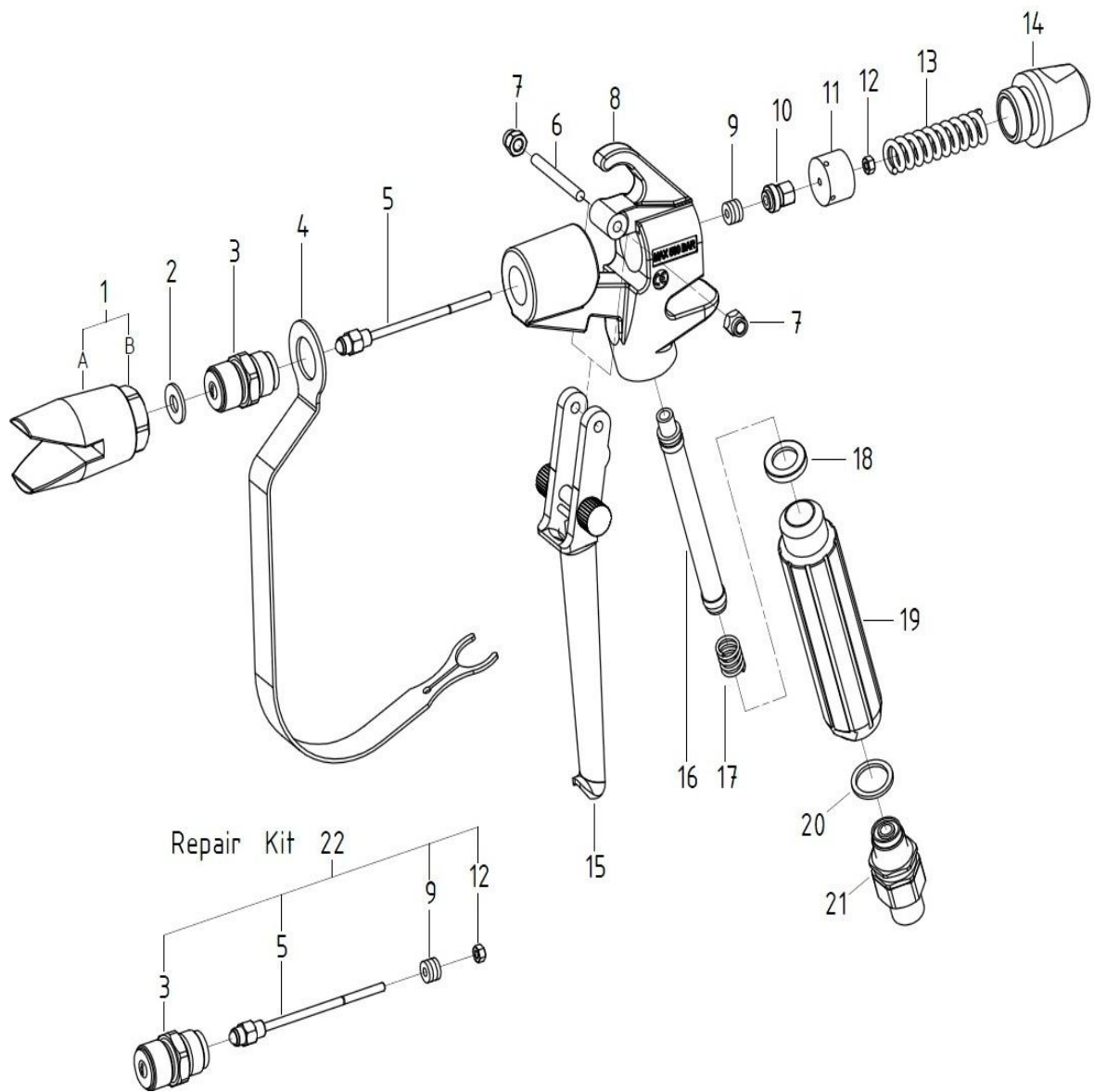
| Problem | Cause | Solution |
|--|--|---|
| Gun with shoot spraying | | See the manual of used pump |
| Low pressure of fluid outlet | Filters dirty | Filters cleaning |
| Sprout not uniform | Nozzle dirty or damaged | Clean very carefully gun parts. Change damaged parts. |
| leakage of paint from nozzle without activation of flow outlet | Seat ball and ball dirty from dried paint. Seat ball and ball damaged | Clean very carefully gun parts. O Change seat ball and ball. |

7. DISPOSAL AND DEMOLITION OF EQUIPMENT

Last life of the equipment is related to its use which can be continuous or intermittent. When is no longer possible maintenance is recommended the replacement of the equipment. The gun cannot be abandoned in the environment but must be clean and disassembled into its component parts so that they can be disposed in waste collection centers. Any residue mixtures due to washing equipment should be stored in appropriate containers since their dispersion in the environment is harmful and therefore strictly prohibited.



EUROTECHNIKER CIEEI LTDA.
Rua Belém, 70
06529-190 – Sta. Parnaíba – SP – Brasil
PABX: + 55 (11) 4156-9900
www.eurotechniker.com.br



| Pos. | Cod. | Descrizione/Description |
|------|---------|--|
| 1 | 100031 | Paradito/Finger guard |
| 2 | 100030 | Guarnizione ugello ST/ Nozzle seal |
| 3 | 100031R | Manicotto/ Rod with TC ball |
| 4 | 105932R | Paramano/Hand guard |
| 5 | 105813R | Punteruolo / Needle |
| 6-7 | 105051R | Vite grilletto con dadi/ Trigger screw with nuts |
| 8 | 105034R | Corpo pistola / Gun body |
| 9 | 108955K | Kit Premistoppa / Kit packing gland |
| 10 | 108957R | Vite premistoppa / Packing gland screw |
| 11 | 105038R | Pistone di pressione /Pressure piston |
| 12 | 100039R | Dado punteruolo / Needle nut |
| 13 | 105940R | Molla pistone / Piston spring |
| 14 | 105041R | Dado posteriore /Rear nut |
| 15 | 105954R | Grilletto /Trigger |
| 16 | FM20XX | Filtro calcio pistola /Gun filter |
| 17 | 301500 | Molla reggifiltro / Filter spring |
| 18 | 100042R | Guarnizione impugnatura /Handle gasket |
| 19 | 100043R | Impugnatura / Handle |
| 20 | 121418R | Rondella rame / Copper gasket |
| 21 | 1070XX | Raccordo girevole 1/4", 16x1.5/ Inlet adapter 1/4", 16x1.5 |
| 22 | 502000 | Repair kit B500 |